

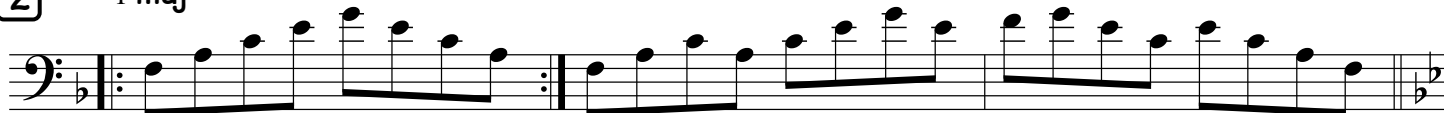
JAZZ CHORDS

Colaneri

1 Cmaj⁹



2 Fmaj⁹



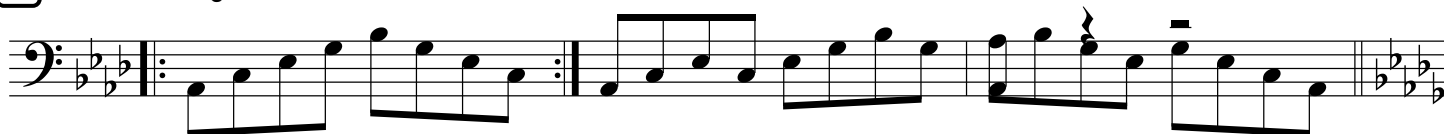
3 Bbmaj⁹



4 Ebmaj⁹



5 Abmaj⁹



6 Dbmaj⁹



7 Gbmaj⁹



8 Gmaj⁹



9

Dmaj⁹

Jazz Chord

Musical notation for exercise 9, Dmaj⁹. The staff is in bass clef with a key signature of two sharps (D major). The exercise consists of two measures of eighth-note runs, each followed by a repeat sign. The first measure starts on D2 and ascends to G4, while the second measure starts on G4 and descends to D2.

10

Amaj⁹

Musical notation for exercise 10, Amaj⁹. The staff is in bass clef with a key signature of three sharps (A major). The exercise consists of two measures of eighth-note runs, each followed by a repeat sign. The first measure starts on A2 and ascends to E4, while the second measure starts on E4 and descends to A2.

11

Emaj⁹

Musical notation for exercise 11, Emaj⁹. The staff is in bass clef with a key signature of four sharps (E major). The exercise consists of two measures of eighth-note runs, each followed by a repeat sign. The first measure starts on E2 and ascends to B4, while the second measure starts on B4 and descends to E2.

12

Bmaj⁹

Musical notation for exercise 12, Bmaj⁹. The staff is in bass clef with a key signature of five sharps (B major). The exercise consists of two measures of eighth-note runs, each followed by a repeat sign. The first measure starts on B2 and ascends to F#4, while the second measure starts on F#4 and descends to B2.

13

F#maj⁹

Musical notation for exercise 13, F#maj⁹. The staff is in bass clef with a key signature of six sharps (F# major). The exercise consists of two measures of eighth-note runs, each followed by a repeat sign. The first measure starts on F#2 and ascends to C#4, while the second measure starts on C#4 and descends to F#2.

An empty musical staff in bass clef with a key signature of six sharps, ending with a double bar line.